



# BeVision D3 Series

## Particle Size and Shape Analyzer

The BeVision D3 Series Particle Size and Shape Analyzer is an advanced, fully automated analyzer based on Dynamic Image Analysis (DIA) technology. It delivers highly accurate particle size and shape characterization, making it an ideal solution for both research and quality control applications.



Model Name	Measuring Range
BeVision D3 Pro	0.5 µm to 16 mm 2 µm to 8 mm (ISO)
BeVision D3	11.5 µm to 16 µm 35 µm to 8 mm (ISO)
BeVision D3 Macro	20 µm to 26 µm 58 µm to 13 mm (ISO)

### Wide Measurement Range

The BeVision D3 Series covers a broad measurement range from 0.5 µm to 26 mm. Its innovative dual-CMOS camera system simultaneously captures coarse and fine particles, enabling complete characterization of wide particle size distributions in a single measurement.

### Comprehensive Particle Morphology Analysis

With more than 37 size and shape parameters, the BeVision D3 Series delivers in-depth insight into particle morphology. It accurately measures key characteristics including length and width, aspect ratio, circularity, compactness and many more. This enables detailed and reliable analysis across all particle types, from granular to elongated and flaky materials.

### Seamless Replacement for Sieve Analysis

The built-in sieve correlation function produces results that are highly consistent with traditional sieve analysis. This allows the BeVision D3 Series to seamlessly replace mechanical sieving, significantly improving efficiency while maintaining trusted comparability.

### Fully Automated Workflow

Powered by intuitive and robust BeVision DIA Software, the analyzer features a fully automated workflow that minimizes operator involvement and eliminates human error. Its ease of use and high throughput make it ideal for R&D laboratories and quality control environments in powder and particle-based industries.

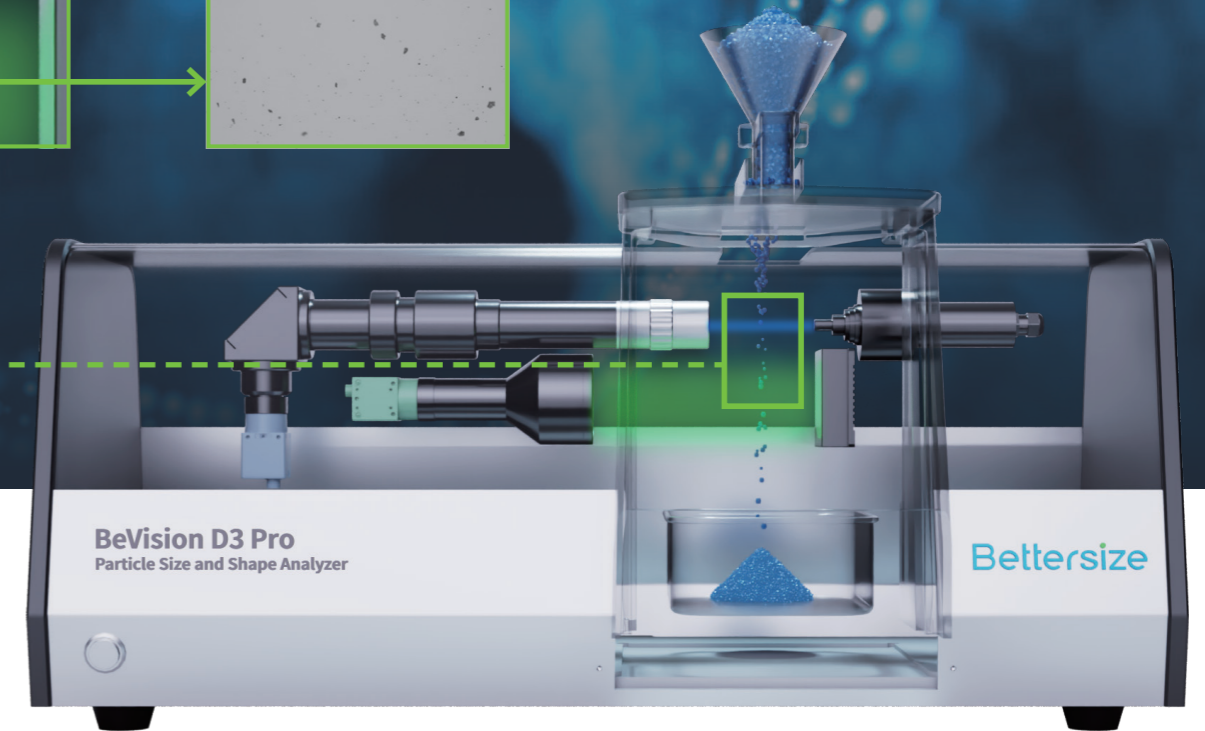
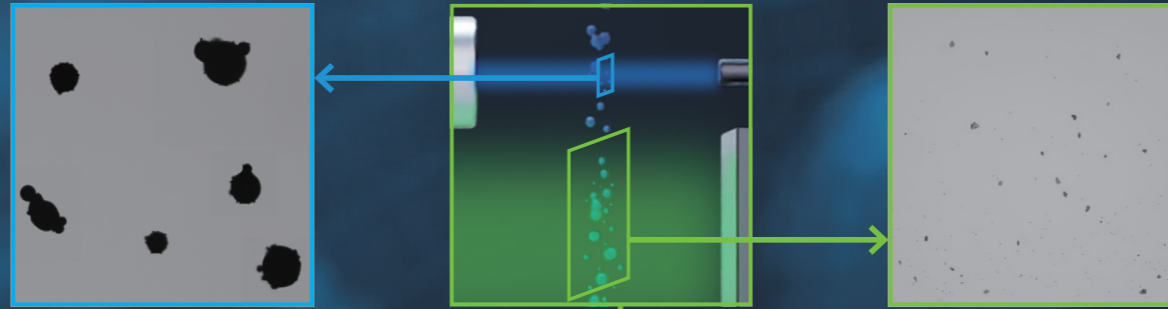
### Features & Benefits

- Wide measuring range: **0.5 µm - 26 mm**
- **37+** parameters for comprehensive size and morphology characterization
- Compliance with **ISO 13322-2** and **ISO 9276**
- **Ultra-high** resolution for narrow particle size distributions
- Accurate detection of oversize and undersize particles
- **Special applications**, including mixture analysis, thickness measurement of flaky particles, length and width measurement of elongated particles
- Results fully comparable with sieve analysis
- Standardized test procedure eliminates deviations caused by human error
- **Fully automated**, easy-to-use operation
- High efficiency with a typical test time of **~3 minutes**
- Full sample recovery
- Almost **maintenance-free** operation

# Dynamic Image Analysis (DIA) Technology

The BeVision D3 Series employs advanced Dynamic Image Analysis (DIA) technology to deliver fast, accurate, and reproducible particle size and shape measurements.

During analysis, dispersed particles pass through a precisely defined detection zone. Uniform background illumination across the entire field of view creates high-contrast particle projections, which are captured in real time by a dual high-speed camera system. One camera focuses on coarse particles, while the other simultaneously captures fine particles, enabling complete size and shape distribution analysis across a wide measurement range in a single run.



## Why DIA Method?

Dynamic Image Analysis (DIA) combines the strengths of traditional and modern particle characterization techniques while eliminating their limitations. By analyzing individual particles in motion, DIA delivers accurate, representative, and reproducible results for both particle size and shape—across a wide measurement range.

Dynamic Image Analysis vs Traditional Methods			
Features	Dynamic Image Analysis	Sieve Analysis	Static Image Analysis
Wide measurement range	●●●	●●	●●
Repeatability & Reproducibility	●●●	●●	●●
High-resolution for narrow distributions	●●●	●	●●●
Accuracy for broad distribution	●●●	●	●
Representative results	●●●	●●●	●
Particle morphology analysis	●●●	●	●●●
Comparable with other technologies	●●	●	●
Oversize particle detection	●●	●●●	●
Individual particle analysis	●●	●	●●●
Ease and speed of measurement	●●●	●	●

### Dual-CMOS Camera System

The dual-camera design allows simultaneous measurement of coarse and fine particles. This unique configuration provides comprehensive distribution information for wide-range samples with a single measurement, significantly improving efficiency and data integrity.

### 5-Megapixel CMOS Camera

Each camera is equipped with a global shutter, enabling sharp, blur-free imaging of fast-moving particles. High pixel resolution ensures precise contour detection and accurate size and shape analysis.

### High-Precision Optical Lens

The high-precision lens system is engineered with zero perspective distortion, faithfully restores the true size and shape of particles for reliable and reproducible results.

### Green Parallel Planar Light Source

A uniform green planar light source ensures stable illumination across the entire field of view and consistent gray values in particle images. This simplifies image binarization and enhances measurement accuracy and repeatability.

### Blue Light Source for Fine Particles

A dedicated blue light source delivers higher-resolution imaging for fine particles, enhancing edge definition and ensuring clear capture of fine particle characteristics.

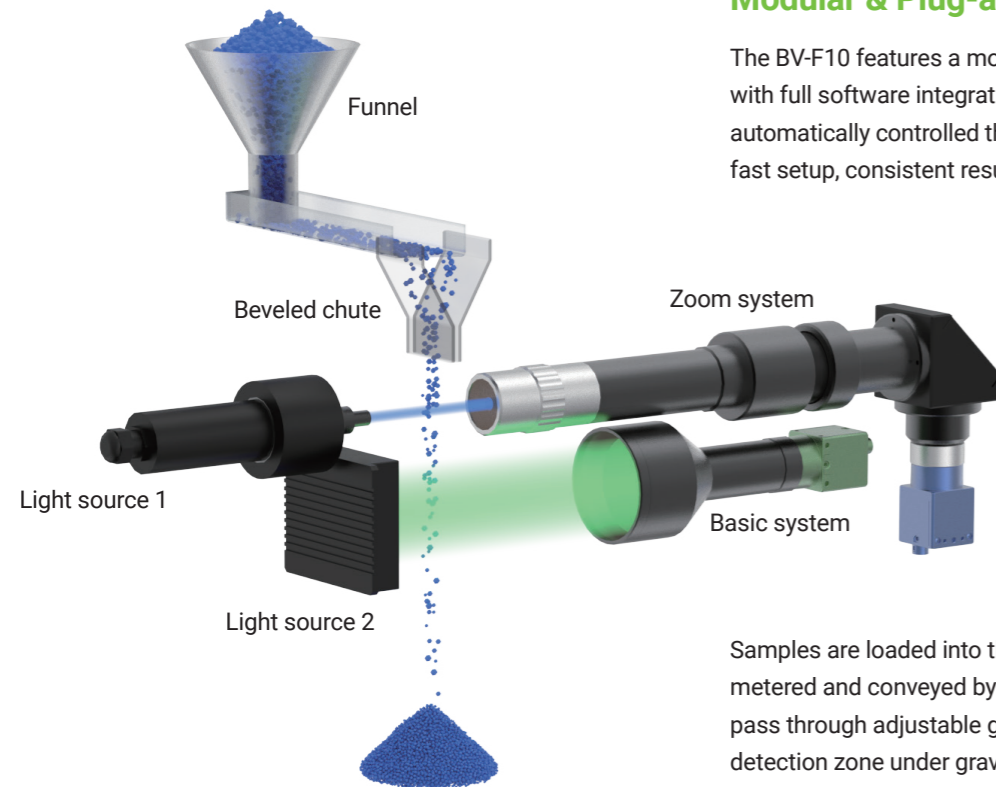
# BV-F10

## Free Fall Dispersion Unit

The BV-F10 Free Fall Dispersion Unit features patented dispersion technology designed for uniform and gentle dispersion of free-flowing powders and granules. By leveraging gravity-driven free fall, it ensures highly representative particle presentation without mechanical stress or particle damage.

### Modular & Plug-and-Play Design

The BV-F10 features a modular, plug-and-play architecture with full software integration. All dispersion parameters are automatically controlled through the system software, enabling fast setup, consistent results, and excellent repeatability.







Samples are loaded into the funnel, where particles are metered and conveyed by a vibrating chute. The particles then pass through adjustable guide slots and fall freely through the detection zone under gravity. After measurement, all particles are collected in the recovery tray, ensuring complete sample recovery.

### Features & Benefits

- Fully software-controlled adjustments**  
 Funnel height, chute feeding rate and guide slot spacing are adjustable automatically via software.
- Optimized particle dispersion**  
 The beveled chute end redirects particles for uniform dispersion across the detection zone.
- Controlled particle flow thickness**  
 Adjustable guide slots control particle flow thickness, minimizing out-of-focus and particle overlap.
- Intelligent feeding rate control**  
 The software dynamically regulates the feeding rate during measurement to ensure optimal dispersion, efficiency and repeatability.
- 100% sample recovery**  
 All particles are collected after measurement, making the system ideal for valuable or limited samples.



### Accessories of the BV-F10

- 
**Low-friction chute**  
 Designed for non-spherical and irregular powders
- 
**High-friction chute**  
 Optimized for spherical granules such as glass beads
- 
**150 ml funnel**
- 
**450 ml funnel**  
 Expansion cylinder

# Specialized Calibration Unit

The Specialized Calibration Unit is designed for accurate calibration and verification of the DIA imaging system, ensuring long-term measurement reliability and compliance.



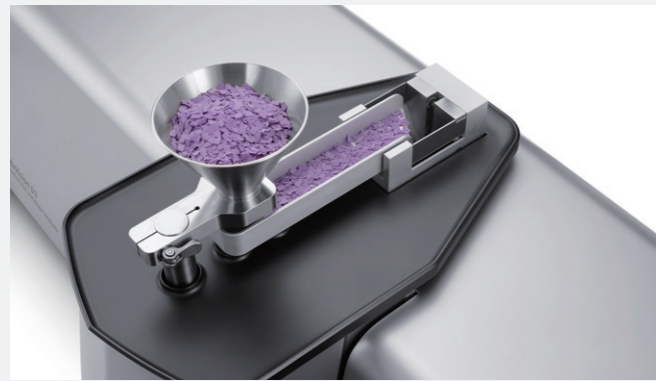
### Features & Benefits

- 2-in-1 functionality**  
 Used for both system calibration and performance verification.
- Metrology-certified accuracy**  
 Certified by the National Institute of Metrology, ensuring traceable and reliable results.
- High precision**  
 Measurement accuracy up to 1µm.
- Simple and user-friendly operation**  
 Quick setup and intuitive use for routine verification.
- Automatic report generation**  
 Software-generated calibration and verification reports support convenient annual verification and audit readiness.

# User-Friendly BeVision DIA Software

## Multiple Measurement Modes

The BeVision DIA Software supports manual testing, automatic testing, and offline image analysis modes, providing maximum flexibility for a wide range of applications including R&D, routine quality control, and method development.



## Comprehensive Measurement Results

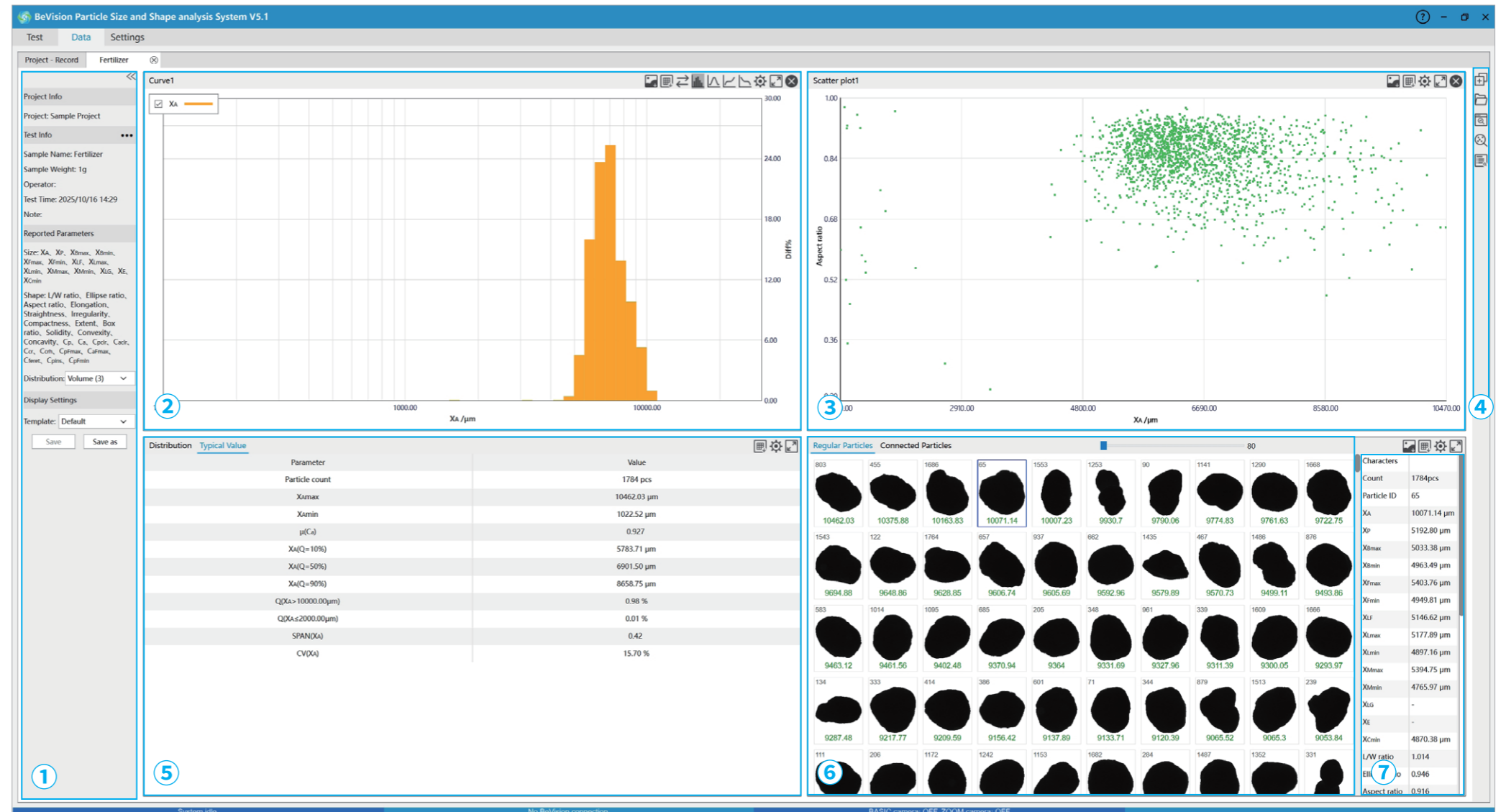
With 37+ size and shape parameters and multiple data visualization options, the software delivers deep insight into particle characteristics. Users can perform detailed statistics, compare multiple distributions, and achieve high-precision classification of particle populations for thorough and reliable evaluation.

## Powerful Data Analysis Tools

The BeVision DIA Software is a robust data analysis platform offering advanced capabilities such as: particle screening and filtering, re-analysis without remeasuring, multi-parameter and multi-result comparison, flexible data export for further analysis.

## Flexible Customization

Output formats, calculation parameters and reporting layouts can be customized to match specific application and quality control requirements. Customized settings can be saved as user-defined templates, ensuring consistency and efficiency across routine measurements with different users.



### 1 Information Bar

Displays essential sample and test information at a glance. Users can freely switch between volume-based, area-based and number-based distributions.

### 2 Distribution Chart

Size or shape distributions are displayed as graphs or histograms. Distribution classification and parameters are fully customizable.

### 3 Scatter Plot

Evaluate particle populations across two dimensions, typically particle size and shape. This enables intuitive identification of trends, clusters and mixed particle populations.

### 4 Function Bar

Provides quick access to essential tools, including: add a chart, view raw particle images, re-analyze data, screening and filtering particles, view and export reports.

### 5 Key Statistics

Customized key statistics of both size and shape distributions, including mean value, span, D10, D50, D90 and more.

### 6 Particle Gallery

Displays all captured particle images, sortable in ascending or descending order by size or shape parameter.

### 7 Particle Details

Click on any individual particle image to view complete size and shape details for that specific particle.

# Particle Size and Shape Parameters

## Size Parameters

### Equivalent Diameters

Area-equivalent diameter  
Perimeter-equivalent diameter

### Feret Diameters

Maximum Feret diameter  
Minimum Feret diameter  
XLF ("Length")

### Martin Diameters

Maximum Martin diameter  
Minimum Martin diameter

### Legendre Ellipse Parameters

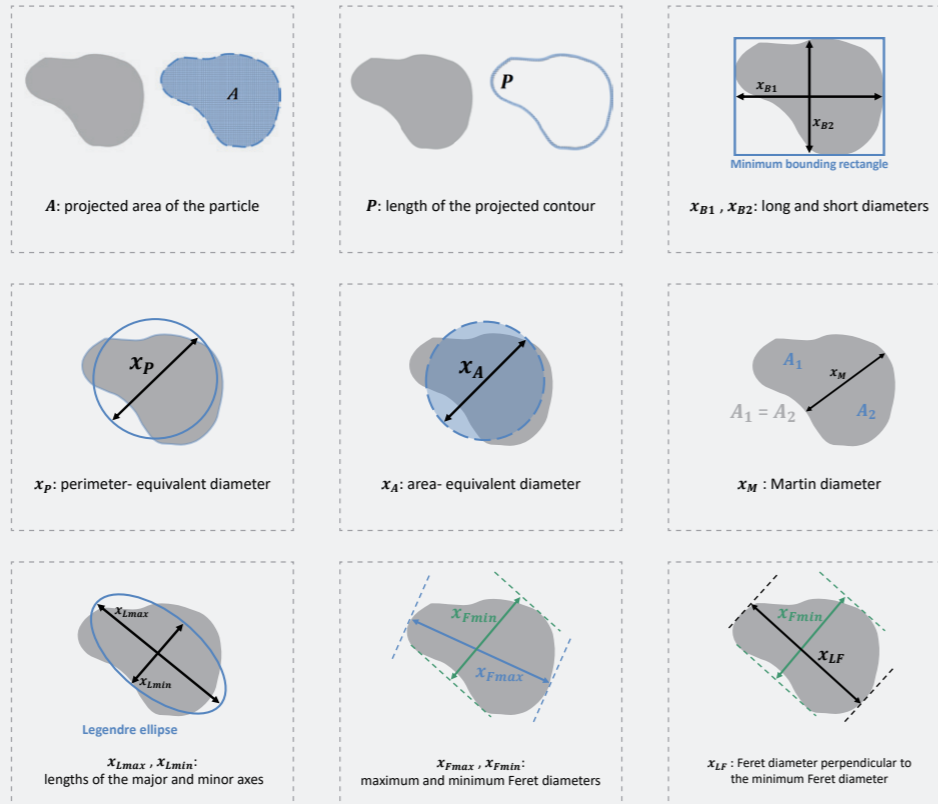
Major axis  
Minor axis

### Additional Size-Related Parameters

Geodesic length  
Thickness  
Minimum chord length

### Minimum Bounding Rectangle Diameters

Long diameter  
Short diameter



## Shape Parameters

### Size Ratio Parameters

#### (Two-Direction Comparison)

Aspect ratio  
Length-to-width (L/W) ratio  
Ellipse axis ratio

### Roundness and Rectangularity

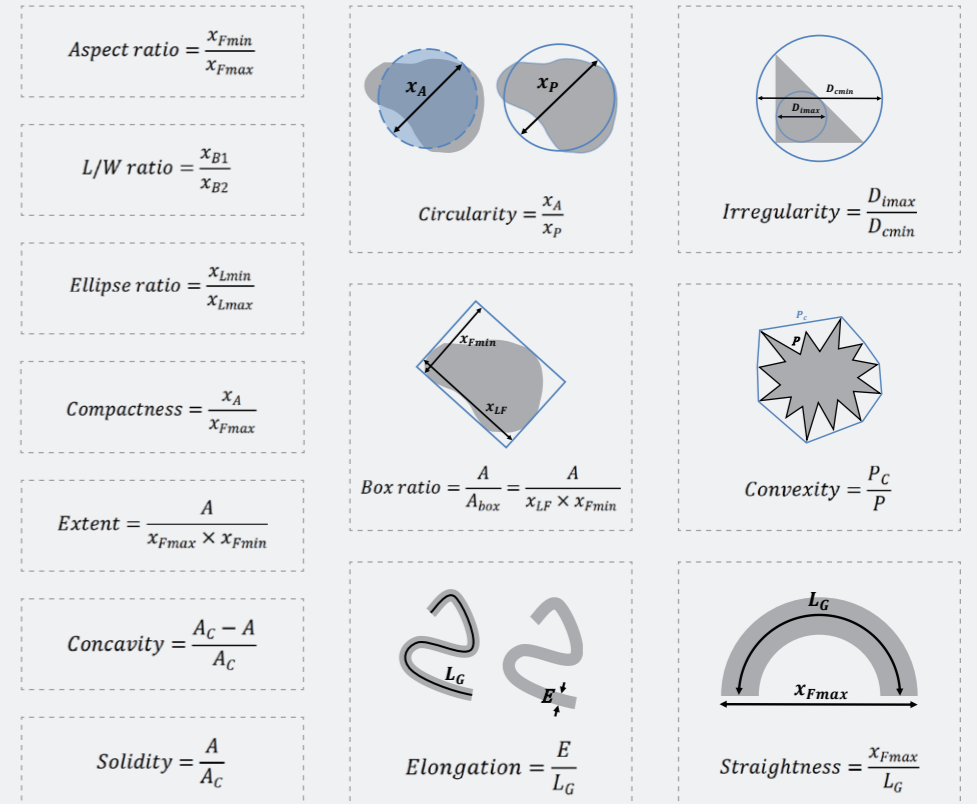
Circularity (11 algorithms)  
Irregularity  
Compactness  
Extent  
Box ratio

### Contour Concavity Parameters

Concavity  
Convexity  
Solidity

### Elongated Particle Parameters

Elongation  
Straightness



## Typical Applications



### Plastics

Resin particles  
Composite fillers  
Recycled plastics



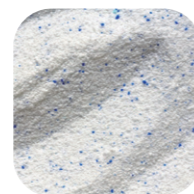
### Agriculture

Fertilizers  
Pesticide granules  
Beans and grains



### Powder Metallurgy & Additive Manufacturing

Metal powders  
Ceramic powders



### Chemicals

Laundry powders  
Additive particles  
Glass beads  
Activated carbon  
Molecular sieves



### Building Materials

Aggregates  
Sand  
Fly ash



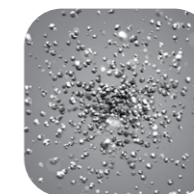
### Mineral

Crushed ore  
Slag  
Sand



### Foods & Beverage

Coffee beans  
Sugar  
Pet food



### Abrasives

Diamond  
Silicon carbide  
Corundum  
Silicon dioxide  
Boron nitride



### Pharma & Nutraceutical

Tablets  
Granules  
Pills



### Batteries

Electrode Materials  
Graphite

# Application Cases

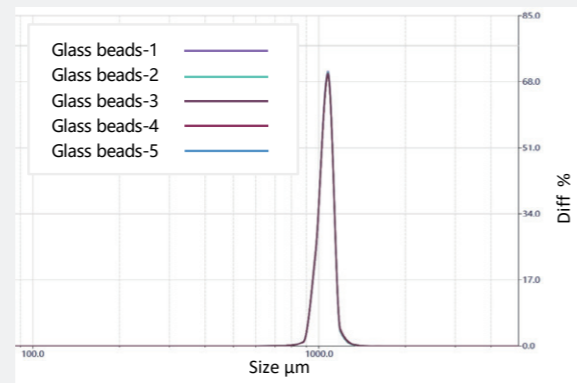
Based on its wide measuring range, direct measurement principle, and broad compatibility with diverse sample types, the BeVision D3 Series can be widely used in many industries ranging from research to quality control, providing in-depth insights into particle analysis.

## 01 Excellent Repeatability

### Example: Glass beads

Glass bead particles are characterized in terms of length, diameter, and curvature. The measurement results closely align with intuitive visual assessments, confirming the accuracy and relevance of DIA-based morphology analysis.

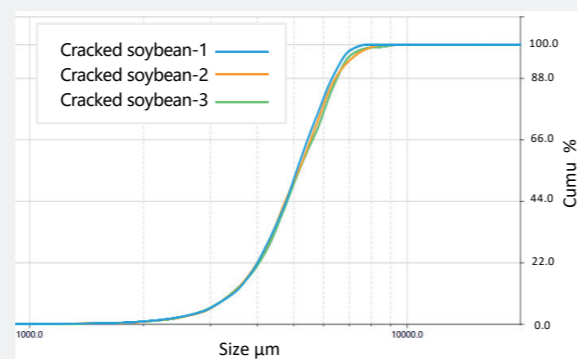
	D10	D50	D90
Mean / $\mu\text{m}$	994.74	1056.32	1112.13
Std. Dev / $\mu\text{m}$	0.39	0.43	0.76
Repeatability	0.04%	0.04%	0.07%



### Example: Cracked soybeans

Even for cracked soybean particles with wide size distributions and highly irregular shapes, the repeatability of D50 remains better than 0.5%, confirming reliable performance for real-world samples.

	D10	D50	D90
Mean / $\mu\text{m}$	3531.49	5251.22	6856.61
Std. Dev / $\mu\text{m}$	25.08	23.89	87.72
Repeatability	0.71%	0.45%	1.28%



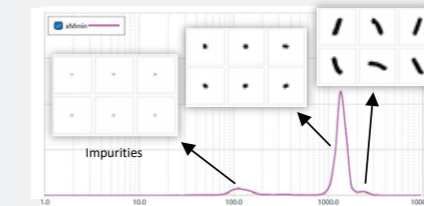
## 02

### Comprehensive Particle Size & Shape Analysis

The BeVision DIA Software provides 37+ particle size and shape parameters, enabling thorough characterization and objective evaluation of diverse particle morphologies.

#### Example: Petroleum catalyst

Rod-like catalyst particles are characterized in terms of length, diameter, and curvature. The measurement results closely align with intuitive visual assessments, confirming the accuracy and relevance of DIA-based morphology analysis.



Parameter	"Length" ( $X_{GL}$ )	"Diameter" ( $X_E$ )	"Curvature" (Straightness)	Features
Definition				/
	10447.92	1946.86	0.883	short, thick, curved
	13151.88	1039.90	0.957	long, thin, curved
	12797.27	1074.98	0.992	long, thin, straight

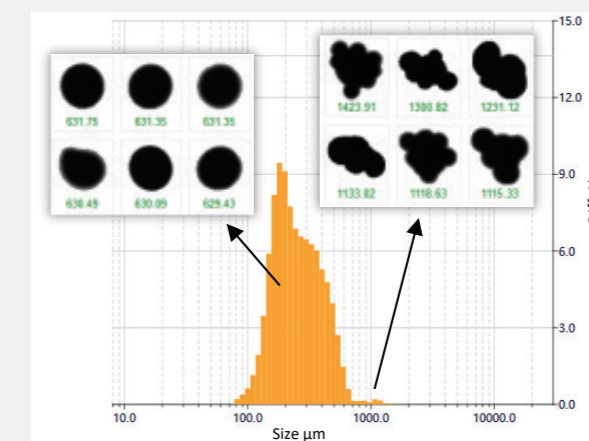
## 03

### Accurate Determination of Low-Content Oversize Particles

By leveraging advanced digital imaging technology and high-speed image capture, BeVision D3 Series achieves ultra-high detection efficiency. Even oversize particles present at extremely low concentrations can be accurately identified and quantified.

#### Example: Colorants

Over 1 million colorant particles were analyzed within 6 minutes. The resulting size distribution revealed a small fraction of oversize particles, and captured images confirmed that each oversize particle was an agglomerate composed of multiple smaller colorant particles.



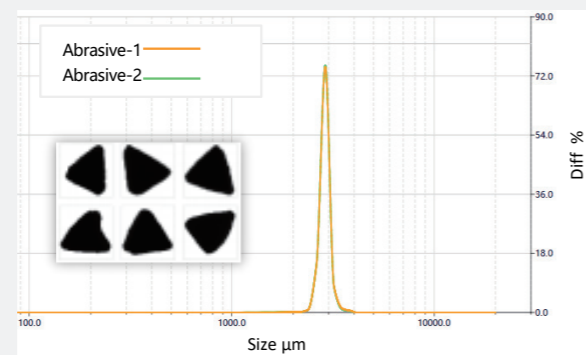
# 04

## Ultra-High Resolution for Narrow Distributions

The BeVision D3 Series analyzes every individual particle captured during measurement and performs statistical analysis across the full particle population, achieving single-particle resolution.

### Example: Abrasives

In abrasive materials, both oversize and undersize particles can negatively affect grinding performance. The BeVision D3 Series precisely quantifies the content of oversize and undersize particles, while also providing particle shape analysis to evaluate abrasive sharpness.

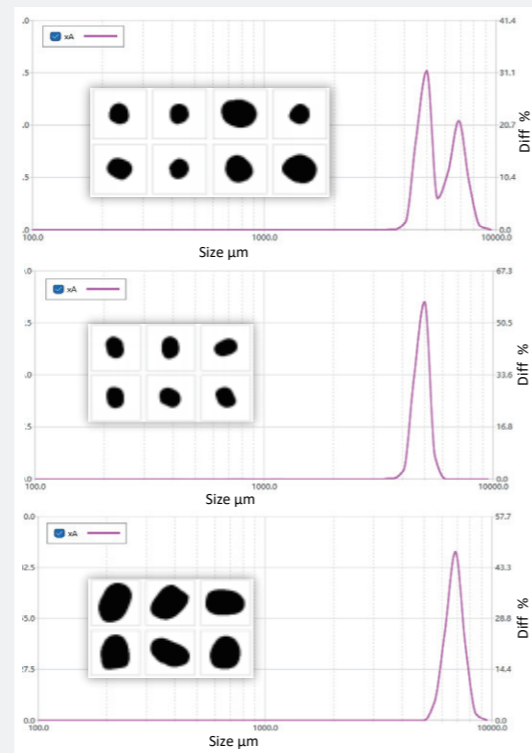


# 05

## Mixture Analysis

The BeVision DIA Software is a powerful data analysis platform that enables separation and analysis of mixed particle systems. Particle mixtures can be classified and filtered based on size, shape, or multiple parameters, allowing each fraction to be analyzed independently within a single dataset.

### Example: Beans



Direct measurement of mixed beans produces a bimodal particle size distribution (PSD). The smaller peak corresponds to mung beans, while the larger peak represents red beans. By applying size-based filtration, the software separates red beans and mung beans from the mixed dataset, enabling independent analysis of each component without additional measurements.

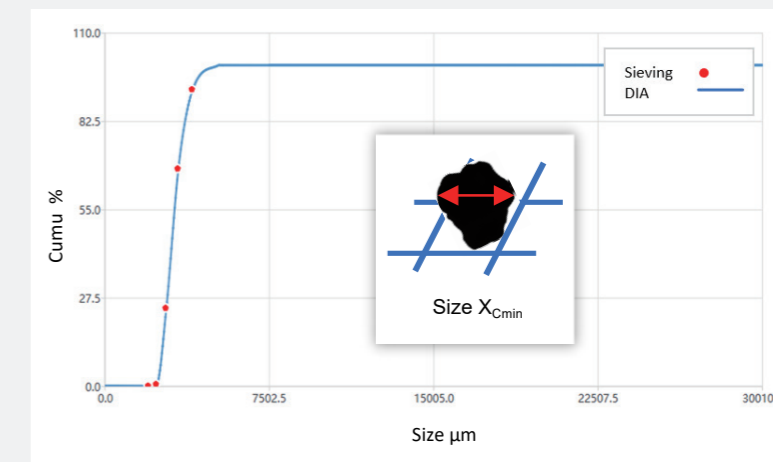
# 06

## Fully Comparable with Sieving Results

The BeVision D3 Series uses a sieve-equivalent diameter aligned with the fundamental principles of sieving, delivering particle size distributions (PSD) that are highly consistent with traditional sieve analysis. Its dedicated sieve correlation function automatically compensates for systematic differences related to measurement principles, particle shape and statistical effects, and directly outputs sieving-correlated PSD results.

### Example: Fertilizer

PSDs measured by the BeVision D3 show excellent agreement with sieve analysis results. Users can switch seamlessly from mechanical sieving to the BeVision D3 system, significantly improving testing efficiency while reducing labor costs.



# 07

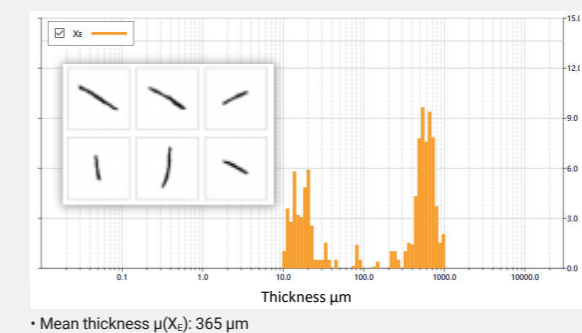
## Thickness Measurement of Flaky Particles

The BeVision D3 Series is capable of capturing cross-sectional images of flaky particles during measurement, enabling automatic and direct thickness measurement.

### Example: Soybean meal

The thickness of the flaky soybean meal residue after pressing directly reflects the residual oil content. Conventional thickness measurement relies on manual caliper measurements of individual particles, resulting in extremely low efficiency and poor representativeness.

The BeVision D3 system automatically measures and outputs the thickness distribution and mean thickness, significantly improving measurement efficiency, repeatability, and statistical reliability.



Parameter	BeVision D3	BeVision D3 Macro	BeVision D3 Pro
Measurement Principle	DIA	DIA	DIA
Optical System	Single-lens system	Single-lens system	Dual-lens system
Measurement Range	11.5 µm – 16 mm	20 µm – 26 mm	0.5 µm – 16 mm
CMOS Camera	5 megapixels	5 megapixels	5 megapixels per camera
Light Source	Green parallel planar light	Green parallel planar light	<b>Basic system:</b> green parallel planar light <b>Zoom system:</b> blue light
Repeatability (D50 of standards)	≤ 0.5 %	≤ 0.5 %	≤ 0.5 %
Result Output Format	Charts: Excel / TXT / JPG / BMP Reports: PDF / Excel		
Recommended Sample Amount	< 20 mg - 200 g (sample type dependent)		
Typical Test Time	3 minutes (sample dependent)		
Dimensions (L × W × H)	686 mm × 300 mm × 325 mm		
Weight	24 kg		
Power Supply	100-240 VAC, 50/60 Hz		
Conformity	ISO 13322-2, ISO 9276		
Computer Configuration	Intel® Core™ i9 (14th gen), 32 GB RAM, 64-bit Windows 11, 1 TB SSD		
Accessories of the BV-F10			
Funnels	150 ml stainless steel funnel, 450 ml stainless steel funnel expansion cylinder		
Chutes	High-friction stainless steel chute, low-friction stainless steel chute		

# Bettersize

BETTER PARTICLE SIZE SOLUTIONS

## Bettersize Instruments Ltd.

No. 9, Ganquan Road, Jinquan Industrial Park,  
Dandong, Liaoning, China

Postcode: 118009

Tel: +86-755-26926582

## Bettersize Inc.

3185 Airway Ave, Suite C2, Costa Mesa,  
CA 92626, United States

Tel: +1 833-699-7493 (SIZE)

info@bettersize.com  
www.bettersizeinstruments.com



Visit Our  
BeVision D3 Series Site



Visit Our Official  
YouTube Channel

**Disclaimer:** By using or accessing any materials provided by Bettersize Instruments Ltd. in electronic format, you agree to the Disclaimer without any qualification or limitation. While diligent care has been taken to ensure the accuracy of the information contained herein, Bettersize Instruments Ltd. shall not be liable for any errors or damages in connection with the use of these materials. The information is provided as general information, and no representation or warranty, whether express or implied, is made as to its accuracy, completeness, or correctness. It does not constitute part of a legal offer or contract. Bettersize Instruments Ltd. reserves the right to modify, alter, add, and delete the content outlined in these materials without prior notice and without any subsequent liability to the company.

Copyright: © 2026 Bettersize Instruments Ltd. | All Rights Reserved  
13.0405.00.01  
May 2026